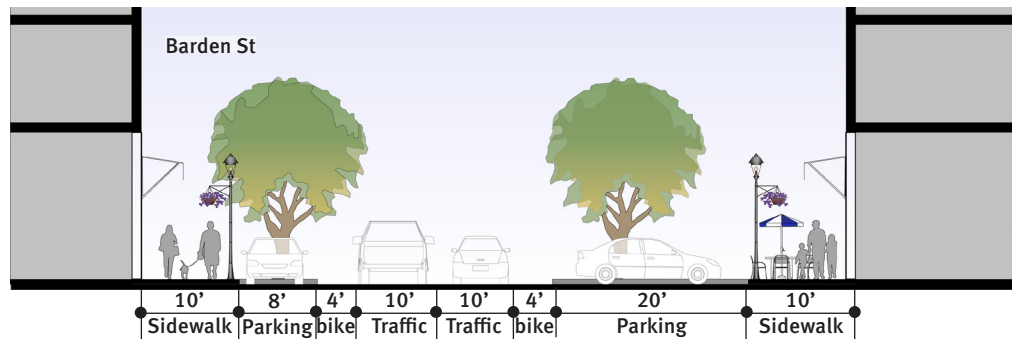
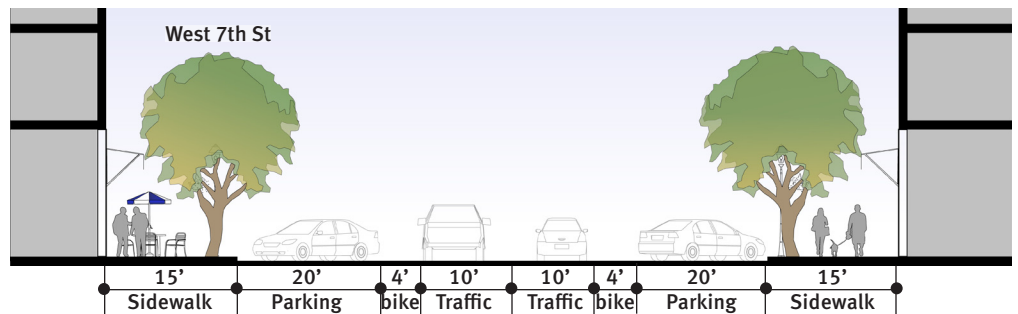
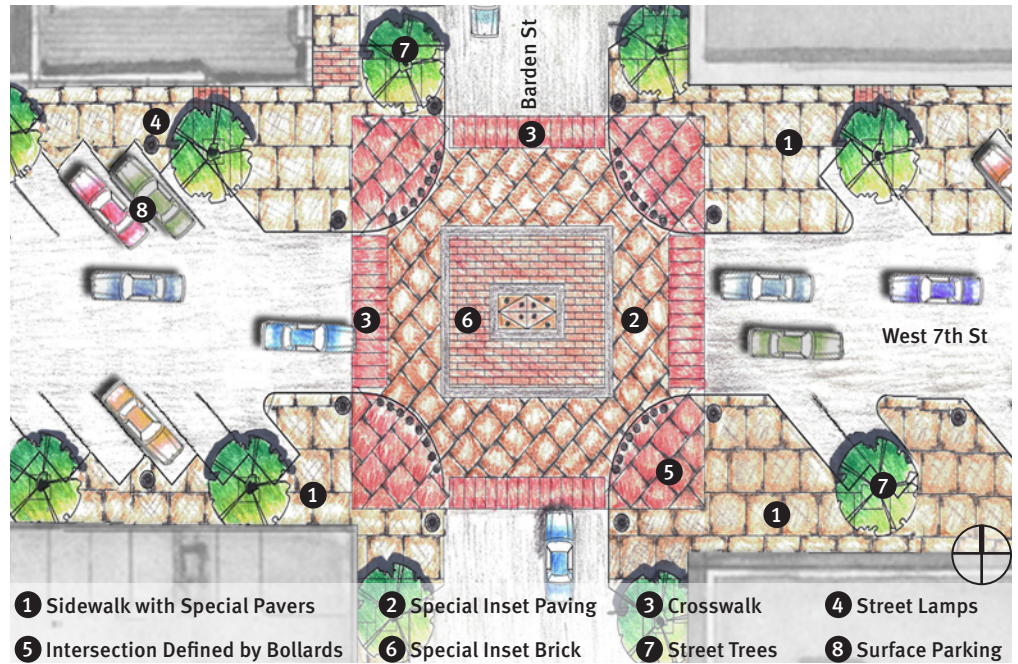


# Museum Place Streetscapes Master Planning

Fort Worth, Texas



Museum Place  
Development Group  
500 units/ 40 Condominiums  
11 Acres  
130,000 sf Office  
173,000 sf Retail

As part of the Museum Place redevelopment efforts, JHP developed urban design streetscape standards which were adopted by the City of Fort Worth as part of the Cultural District redevelopment standards. The intent of the urban streetscaping standards were to complement the master plan and to help create a walkable urban mixed-use neighborhood. The emphasis was on creating sidewalks, plazas, and on-street parking to encourage a vibrant pedestrian and retail experience.